

Royal Meadows

EDINBURGH

FOUR BEDROOM TOWNHOUSE

02

	Ft	M
Kitchen / Dining	23'0" x 14'0"	7.02 x 4.28
Drawing Room	17'11" x 13'10"	5.47 x 4.23
WC	6'5" x 4'3"	1.96 x 1.32
Utility	7'4" x 4'3"	2.24 x 1.30
Living Room	18'0" x 13'11"	5.49 x 4.25
Principal Bedroom	11'2" x 17'10"	3.42 x 5.46
Principal En-suite	11'3" x 8'6"	3.43 x 2.60
Study 1	4'8" x 14'0"	1.47 x 4.26
Bedroom 2	10'9" x 11'8"	3.28 x 3.56
Bedroom 2 En-suite	10'3" x 5'4"	3.13 x 1.61
Bedroom 3	11'2" x 12'6"	3.40 x 3.81
Bedroom 4	11'3" x 11'2"	3.43 x 3.40
Study 2	11'6" x 6'5"	3.52 x 1.96
Total Area	2,500 sq ft	232 sq m
Garden	996 sq ft	92 sq m
Additional Storage Above Utility & WC via access hatch	67.9 sq ft	6.31 sq m

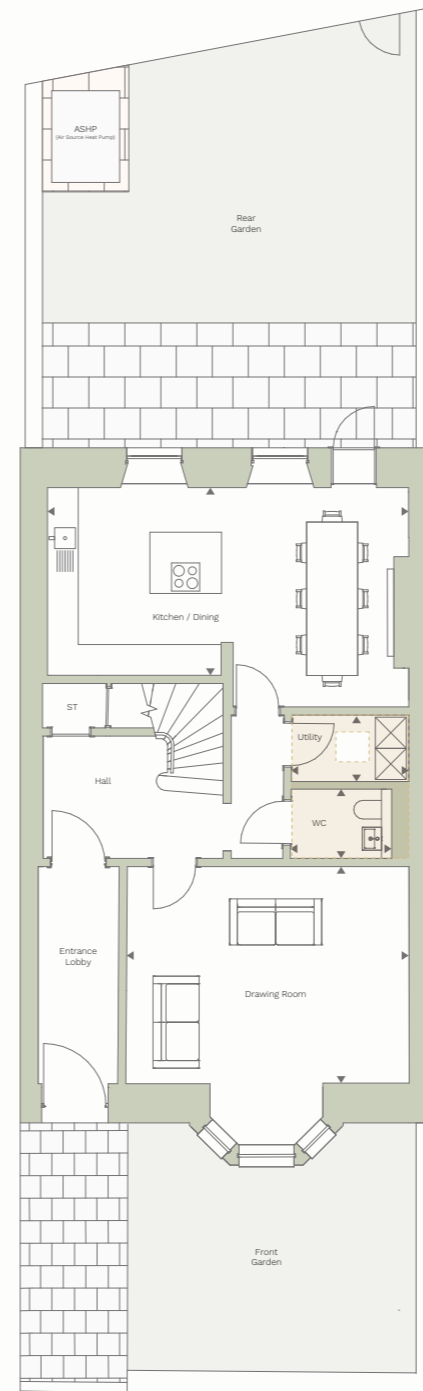
LOCATION



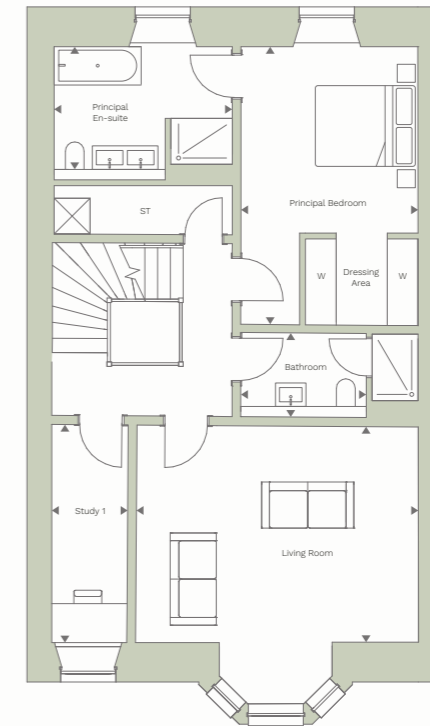
KEY

ST: Storage
W: Wardrobe

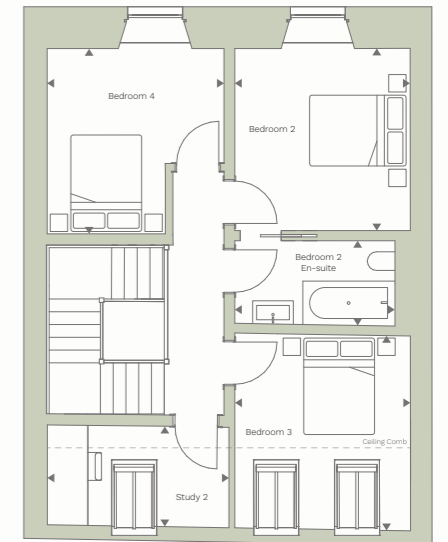
GROUND FLOOR



FIRST FLOOR



SECOND FLOOR



Additional Storage



North