

# Royal Meadows

EDINBURGH

## FIVE BEDROOM TOWNHOUSE

# 05

	Ft	M
Kitchen / Dining	22'6" x 12'7"	6.90 x 3.90
Drawing Room	17'9" x 14'1"	5.46 x 4.32
WC	6'3" x 4'1"	1.94 x 1.28
Bathroom	10'3" x 5'3"	3.14 x 1.62
Garden Room	16'8" x 12'	5.14 x 3.66
Principal Bedroom	16'9" x 14'2"	5.16 x 4.35
Principal En-suite	5' x 13'6"	1.55 x 4.16
Bedroom 2	11'8" x 9'5"	3.61 x 2.90
Bedroom 2 En-suite	8' x 5'2"	2.44 x 1.60
Bedroom 3	10'2" x 9'4"	3.12 x 2.89
Bedroom 4	11'1" x 10'4"	3.40 x 3.19
Shower Room	6'5" x 8'3"	2.00 x 2.53
Bedroom 5	10'4" x 10'6"	3.19 x 3.26
Study	11'7" x 10'3"	3.58 x 3.16
<b>Total Area</b>	<b>2,805 sq ft</b>	<b>261 sq m</b>
<b>Garden</b>	<b>612 sq ft</b>	<b>57 sq m</b>

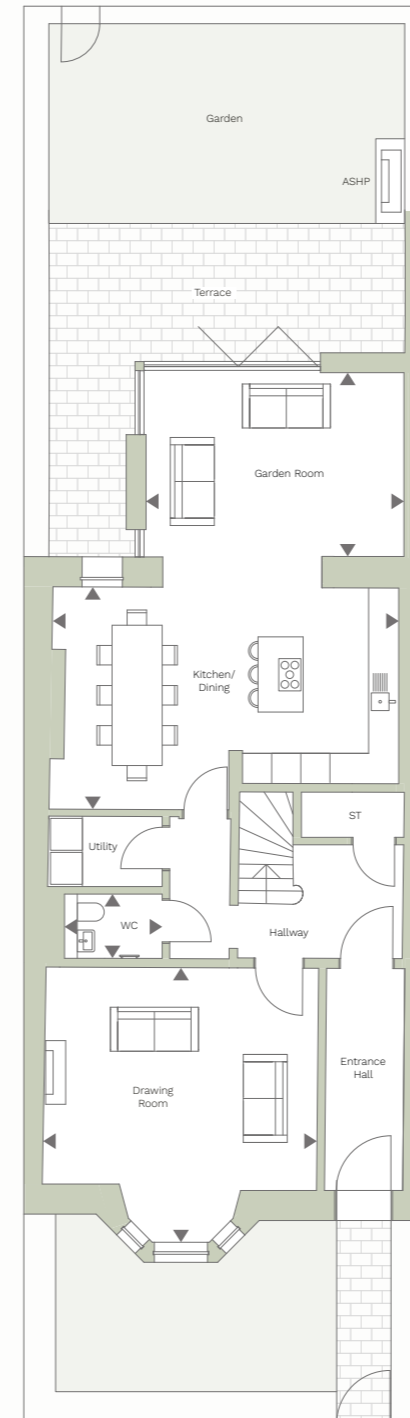
### LOCATION



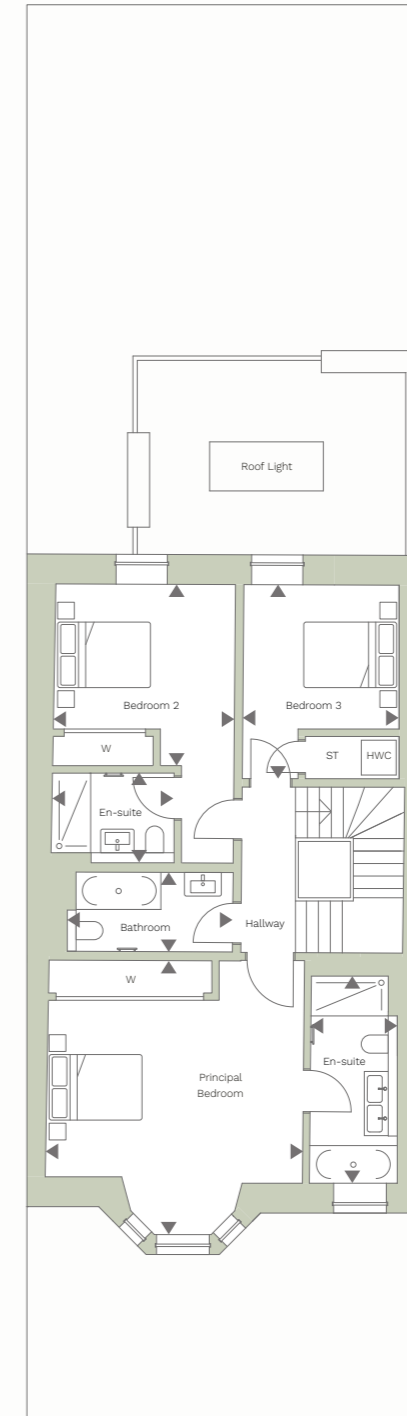
### KEY

ST: Storage  
W: Wardrobe

### GROUND FLOOR



### FIRST FLOOR



### SECOND FLOOR

