

# Royal Meadows

EDINBURGH

## FIVE BEDROOM TOWNHOUSE

# 04

	Ft	M
Kitchen / Dining	22'9" x 12'9"	6.98 x 3.95
Drawing Room	17'8" x 13'9"	5.43 x 4.25
WC	6'6" x 5'	2.04 x 1.55
Bathroom	10' x 5'2"	3.07 x 1.61
Garden Room	16'7" x 12'	5.11 x 3.68
Principal Bedroom	16'8" x 14'1"	5.15 x 4.30
Principal En-suite	4'9" x 12'9"	1.50 x 3.96
Bedroom 2	11'9" x 9'7"	3.64 x 2.97
Bedroom 2 En-suite	8'1" x 5'2"	2.47 x 1.60
Bedroom 3	10'4" x 9'6"	3.17 x 2.94
Bedroom 4	11'5" x 9'7"	3.53 x 2.97
Shower Room	6'5" x 7'5"	2.01 x 2.30
Bedroom 5	9'8" x 10'1"	3.08 x 3.11
Study	11'5" x 10'5"	3.51 x 3.22
<b>Total Area</b>	<b>2,770 sq ft</b>	<b>258 sq m</b>
<b>Garden</b>	<b>649 sq ft</b>	<b>60 sq m</b>

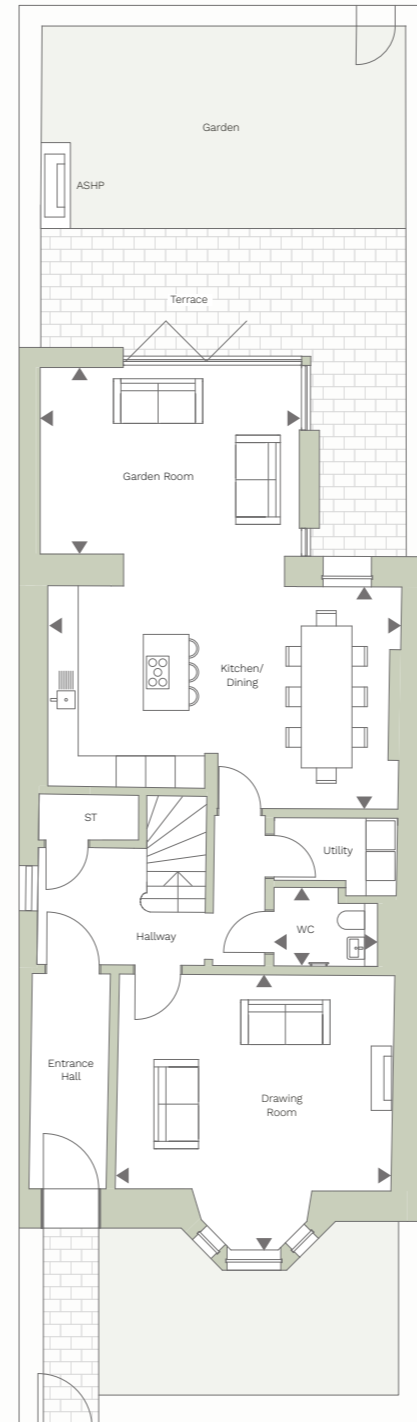
### LOCATION



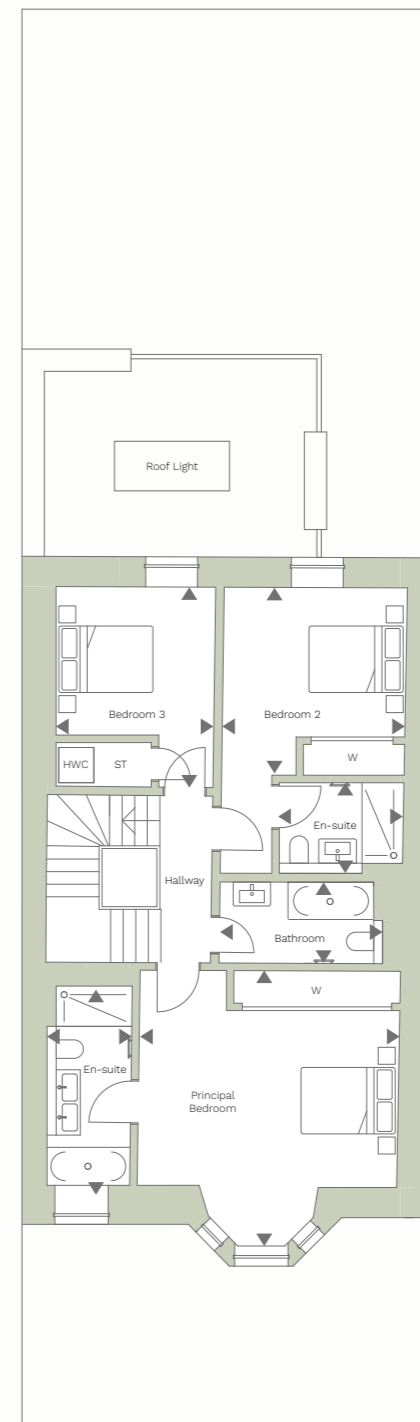
### KEY

ST: Storage  
W: Wardrobe

### GROUND FLOOR



### FIRST FLOOR



### SECOND FLOOR

