

Royal Meadows

EDINBURGH

FIVE BEDROOM TOWNHOUSE

03

	Ft	M
Kitchen / Dining	22'8" x 12'9"	6.95 x 3.95
Drawing Room	17'8" x 13'9"	5.43 x 4.24
WC	6'7" x 4'4"	2.06 x 1.37
Bathroom	10'1" x 5'3"	3.08 x 1.63
Garden Room	17'7" x 12'	5.42 x 3.66
Principal Bedroom	16'8" x 14'	5.15 x 4.29
Principal En-suite	4'9" x 13'	1.50 x 3.97
Bedroom 2	11'9" x 9'6"	3.65 x 2.94
Bedroom 2 En-suite	7'9" x 5'2"	2.43 x 1.60
Bedroom 3	10'3" x 9'7"	3.15 x 2.97
Bedroom 4	11'9" x 11'1"	3.64 x 3.41
Shower Room	7'1" x 7'2"	2.18 x 2.21
Bedroom 5	10'8" x 10'7"	3.30 x 3.27
Study	12' x 10'7"	3.66 x 3.28
Total Area	2,780 sq ft	258 sq m
Garden	634 sq ft	59 sq m

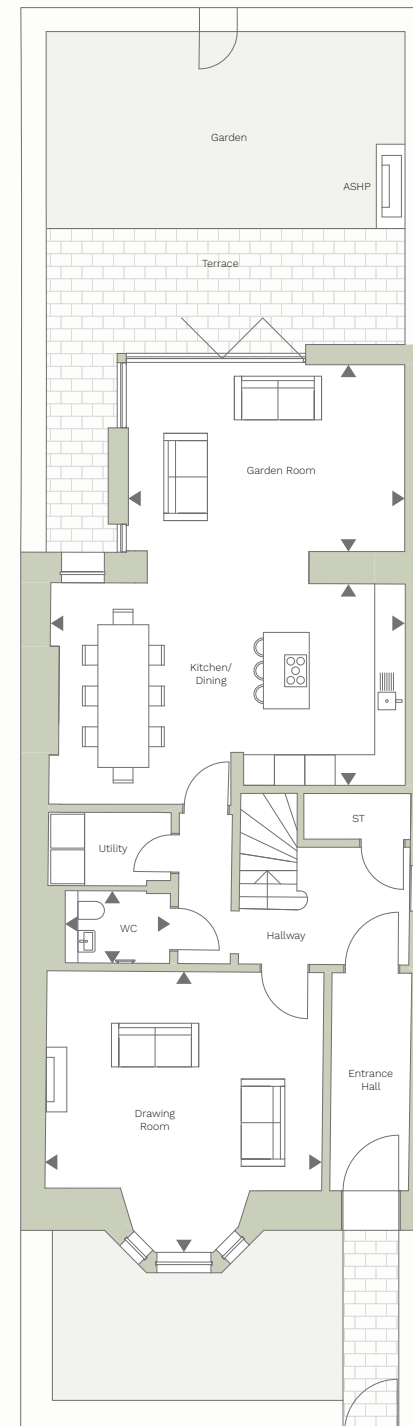
LOCATION



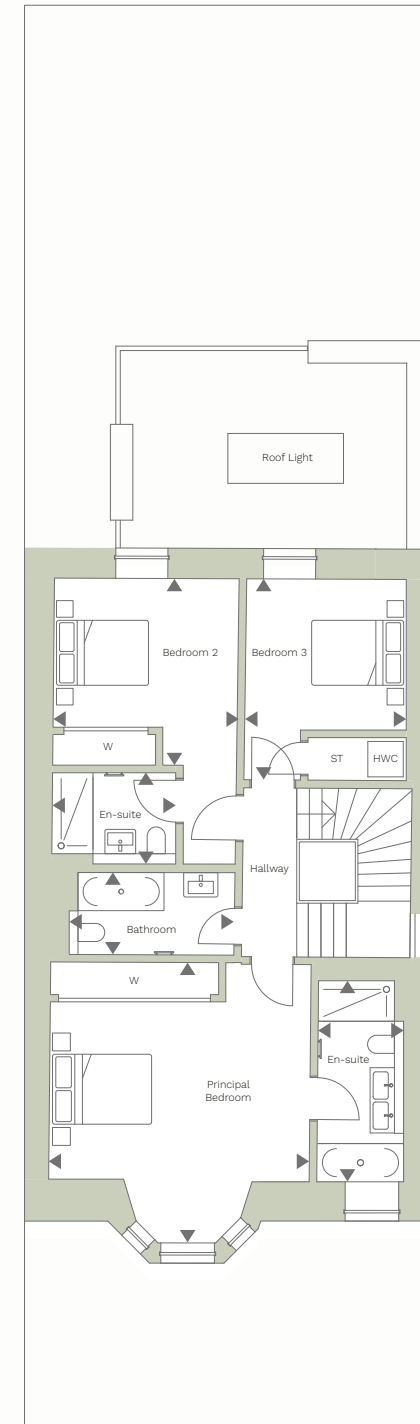
KEY

ST: Storage
W: Wardrobe

GROUND FLOOR



FIRST FLOOR



SECOND FLOOR

