

Royal Meadows

EDINBURGH

FIVE BEDROOM TOWNHOUSE

02

	Ft	M
Kitchen / Dining	22'7" x 13'	6.94 x 3.97
Drawing Room	17'6" x 14'	5.37 x 4.27
WC	6'6" x 4'5"	2.03 x 1.39
Bathroom	10'1" x 5'	3.10 x 1.55
Garden Room	16'3" x 12'	4.98 x 3.66
Principal Bedroom	16'7" x 13'9"	5.12 x 4.25
Principal En-suite	5'2" x 12'9"	1.59 x 3.96
Bedroom 2	12'1" x 10'	3.70 x 3.07
Bedroom 2 En-suite	7'8" x 5'2"	2.40 x 1.60
Bedroom 3	10'2" x 9'7"	3.11 x 2.96
Bedroom 4	12' x 12'8"	3.66 x 3.91
Bedroom 5	12' x 12'8"	3.66 x 3.89
Total Area	2,485 sq ft	231 sq m
Garden	605 sq ft	56 sq m

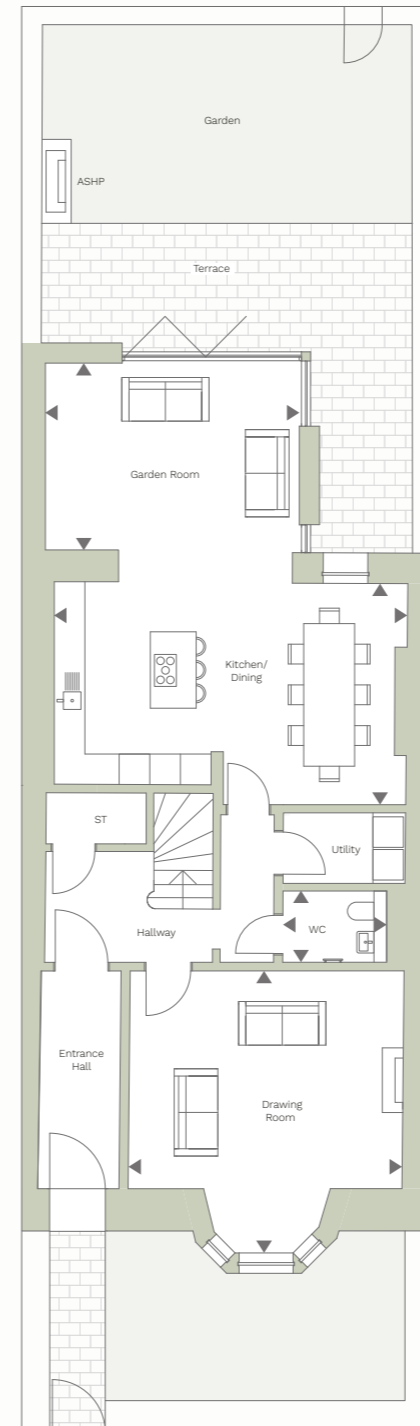
LOCATION



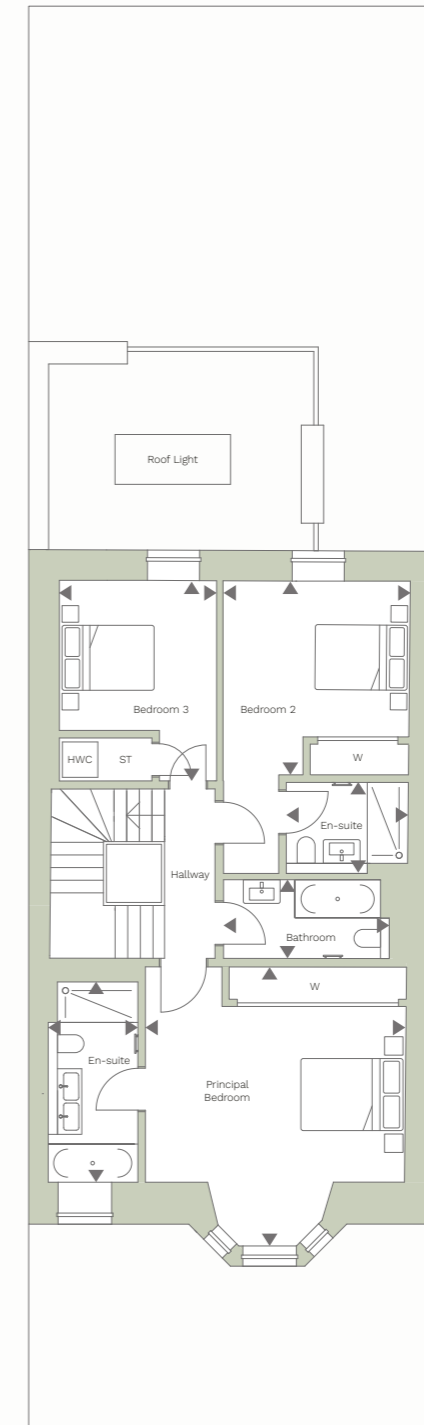
KEY

ST: Storage
W: Wardrobe

GROUND FLOOR



FIRST FLOOR



SECOND FLOOR

