

Royal Meadows

EDINBURGH

FIVE BEDROOM TOWNHOUSE

01

	Ft	M
Kitchen / Dining	23'7" x 13'	7.23 x 3.98
Drawing Room	18'6" x 14'	5.69 x 4.26
WC	7'8" x 4'6"	2.38 x 1.40
Bathroom	11'8" x 5'4"	3.60 x 1.65
Garden Room	15'8" x 12'	4.83 x 3.66
Principal Bedroom	18'1" x 14'1"	5.35 x 4.29
Principal En-suite	5'3" x 12'9"	1.61 x 3.96
Bedroom 2	12'8" x 9'7"	3.90 x 2.96
Bedroom 2 En-suite	9' x 5'2"	2.74 x 1.61
Bedroom 3	10'3" x 9'8"	3.16 x 2.99
Bedroom 4	12'9" x 12'8"	3.93 x 3.91
Bedroom 5	12'9" x 12'8"	3.93 x 3.89
Total Area	2,565 sq ft	238 sq m
Garden	595 sq ft	55 sq m

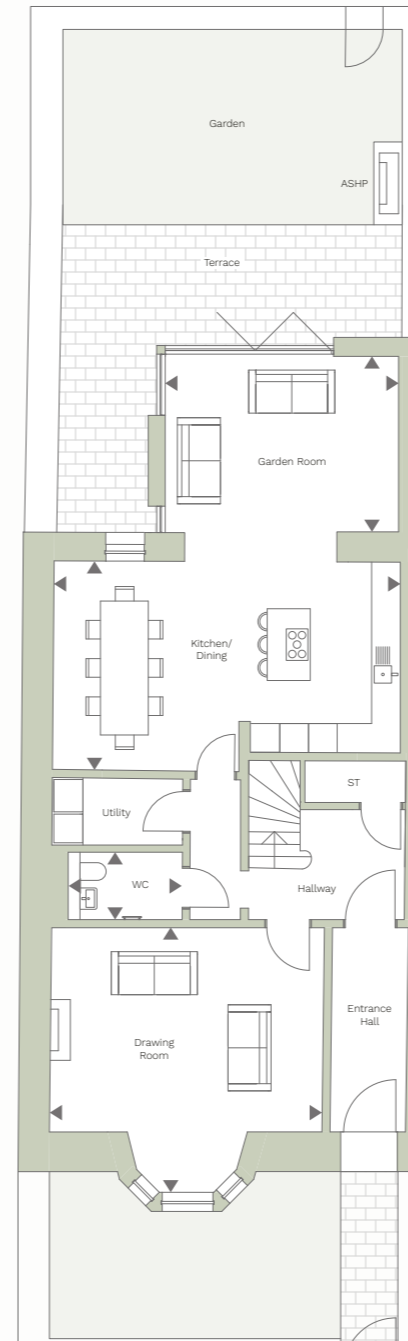
LOCATION



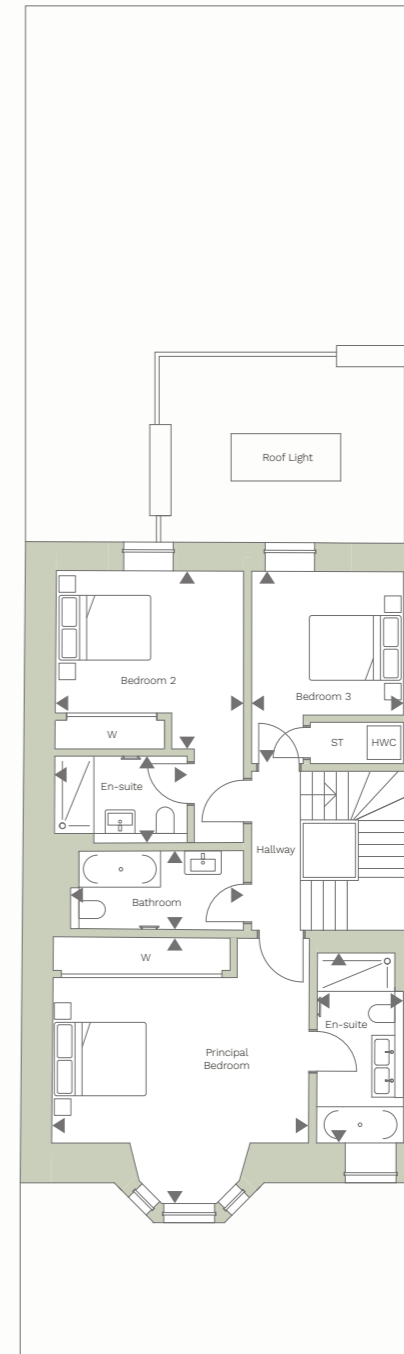
KEY

ST: Storage
W: Wardrobe

GROUND FLOOR



FIRST FLOOR



SECOND FLOOR

